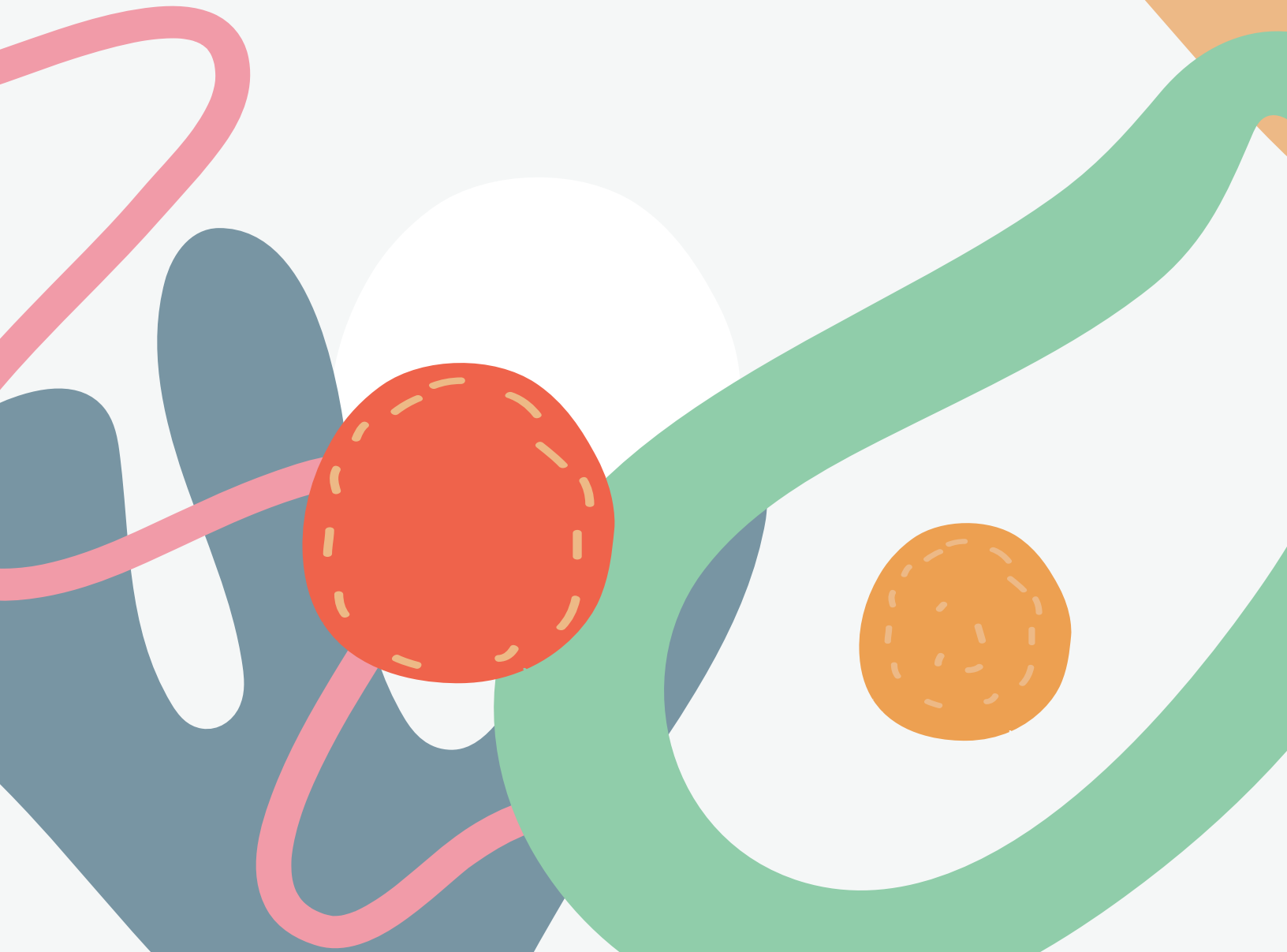


# KINDERGARTEN 101 FAQS



# KINDERGARTEN FAQs

## Who attends kindergarten?

Students who will be 5 years old by Sept. 1, 2022.

## Where will my child attend kindergarten?

You can find the district boundaries on our website at [www.baschools.org/boundaries](http://www.baschools.org/boundaries). If you have any questions, contact enrollment at 918-259-7400.

## What are the hours for kindergarten?

Parents may drop off elementary students between 8:55 a.m - 9:15 a.m. The tardy bell rings at 9:15 a.m. The dismissal bell rings at 4 p.m. daily. These times could change with the adoption of the school calendar.

## Can I walk my child to their classroom every day?

Every elementary school has their own drop-off and pick-up procedure that is safest for their building and parking lots. Elementary students are encouraged to develop independence and walk themselves to class. If parents need a transition period to help their child to class, you will need to check in via our Safe Schools kiosk in the front office and wear the printed name badge in the building prior to walking your child to class.

## Is there a B&A Connections program (before and after care program)?

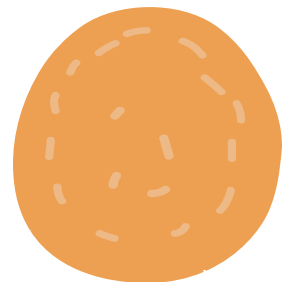
**Yes.** On a first come, first served basis. Enrollment for NEW to B&A Connections is online beginning **May 13**. Please visit [www.baschools.org/connections](http://www.baschools.org/connections)

## Can kindergarten students ride the bus?

**Yes!** If your child lives within 1.5 miles of their assigned school, they are eligible for transportation. Please visit [www.baschools.org/transportation](http://www.baschools.org/transportation) for more information.

## Where do I enroll my child for kindergarten?

Enroll online and contact the enrollment center with questions at 918-259-7400. If you do not have access to a computer or device to enroll online, please visit the enrollment center located inside Central on Main at 210 N. Main. If you are currently in our Pre-K program, you should have received an email from enrollment to start the “returning student/residency verification process”. This will start the enrollment process for your student. Enrollment for students **NEW** to the district begins May 2.



# KINDERGARTEN FAQs

## What documents do I need to enroll my child for kindergarten?

On our district website under the “Parents” tab, you will find all the details about enrollment and the documents you need.

- original birth certificate
- driver’s license/Photo ID for parent/legal guardian
- proof of immunizations
- proof of residence (current gas, water, or electric bill in the parent/legal guardian’s name)

## How many children are in each class?

The number of children in the kindergarten classrooms depends on the enrollment at each site. The earlier parents can enroll their child, the more prepared schools can be with hiring additional teachers if needed. Please encourage your neighbors to enroll early and not wait until August.

## Which immunizations are required to attend kindergarten?

- 5 DTAP (unless their 4th DTAP was after their 4th birthday)
- 4 Polio (unless their 3rd dose was after 4th birthday)
- 2 MMR
- 3 Hepatitis B
- 2 Hepatitis A
- 1 Varicella (2 Varicella is recommended)

## Will breakfast and lunch be provided?

Breakfast and lunch are available for purchase. Families should complete the Free and Reduced Lunch form (starting July 1) to help with breakfast and lunch costs. Students are welcome to bring their own lunch from home. If your child has food allergies, please make sure you communicate with the health office and with the teacher.

## Can I enroll my 6-year-old in kindergarten?

**Yes.** You may receive follow-up communication from the Executive Director of Teaching and Learning to confirm you are aware your child is eligible for 1st grade and to confirm your wish is to give them a growth-year based on maturity.

## Does my child have to be potty trained to attend kindergarten?

Your child will need to attend to their own toileting needs. If your child requires help with self-cleaning, you will need to come to the school to assist your child. Occasionally, accidents happen, so we encourage **ALL** students to have a clean change of clothes in their backpack.

## If my child has a diagnosis from a doctor that may affect their learning, what do I do?

If possible, upload the doctor’s diagnosis with your enrollment paperwork. If you cannot upload the paperwork, please take the paperwork to the enrollment office and they will upload the paperwork and email the paperwork to special services. If you have additional questions, please call Special Services at 918-259-5700.

# KINDERGARTEN FAQs

## What is the curriculum used at BAPS for kindergarten?

**Reading:** “Making Meaning” by the Center for Collaborative Classroom

**Writing:** “Being a Writer” by the Center for Collaborative Classroom

**Math:** “Stepping Stones” by Origo

**Science:** “National Geographic”

## What can I do to help my child be ready for kindergarten?

Please read with your child over the summer! When you’re driving in the car, play rhyming games, point out shapes and colors in their environment, and ask them questions about themselves (what’s your full name, what’s your mom’s name, etc.). You can also play games like “Candy Land” that involve counting and colors to engage them in fun learning opportunities.

## If I still have questions, who can I contact?

Please feel free to contact Kristin Henness, Executive Director of Teaching and Learning, at [khenness@baschools.org](mailto:khenness@baschools.org) or 918-259-5725 if you have questions regarding curriculum. If you have questions regarding **enrollment**, please contact the enrollment center at 918-259-7400.

## Here are some other helpful resources for your family:

### First time to BAPS?

Everything you will need to know about Back-to-School will be on our website [www.baschools.org](http://www.baschools.org). This is where you can find supply lists and the school calendar for days we are in session and when we are out of school.

### What will my child be learning?

<https://sde.ok.gov/early-childhood-and-family-education>

