

Did You Hear About...

A	B	C	D	E	F
G	H	I	J	K	L
					?

Use a calculator to do each exercise. Find your answer and notice the word next to it. Write this word in the box containing the letter of the exercise.

I. Solve. Round each answer to the nearest tenth.

(A) $\frac{7.5}{12} = \frac{4.2}{x}$

(B) $\frac{15}{8} = \frac{80}{x}$

(C) $\frac{6}{9.4} = \frac{x}{32}$

(D) $\frac{7.9}{x} = \frac{1}{25}$

(E) $\frac{12}{x} = \frac{3.14}{1}$

(F) $\frac{x}{58} = \frac{37.5}{100}$

II. Solve. Round each answer to the nearest whole number.

(G) Tom's red bicycle travels 50 ft for every 3 pedal turns. How many pedal turns are needed to travel a mile (5,280 ft)?

(H) For a survey, a company decided to call 7 out of every 5,000 people. How many people should be called in a town of 78,000 people?

(I) Gloria Trench checked her gas mileage and found that she had used 16.6 gal of gas to travel 372 mi. At this rate, how many gallons will she use to travel from San Francisco to Washington, D.C., a distance of 2,850 mi?

(J) A U.S. nickel contains 3.9 g of copper and 1.2 g of nickel. How many kilograms of copper must be combined with 500 kg of nickel to make nickel coins?

(K) On the stock exchange, 100 shares of Pizzazz Corp. stock are selling for \$425. How many shares can be purchased for \$1,000?

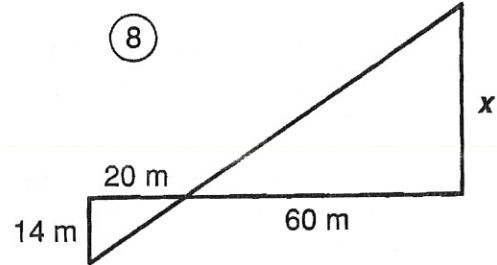
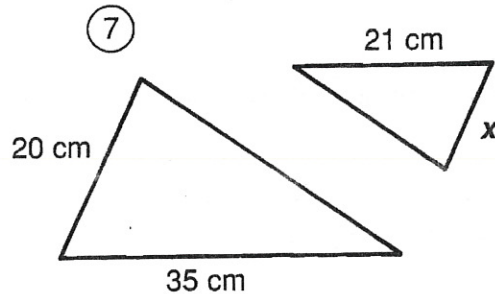
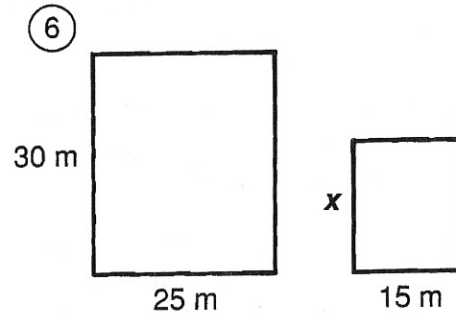
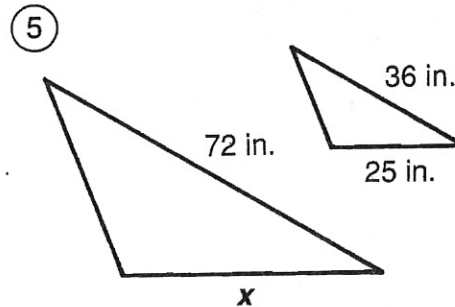
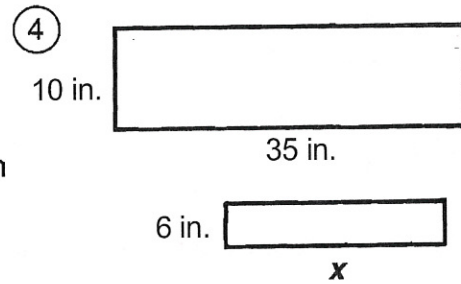
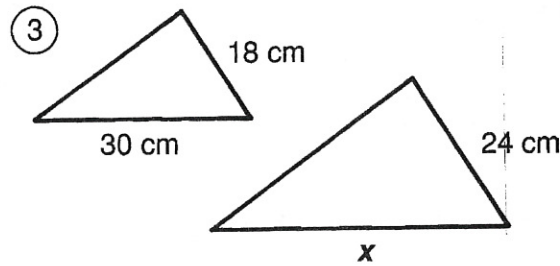
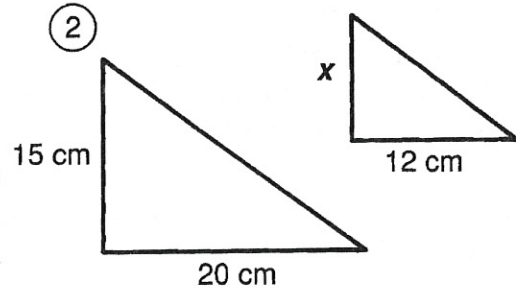
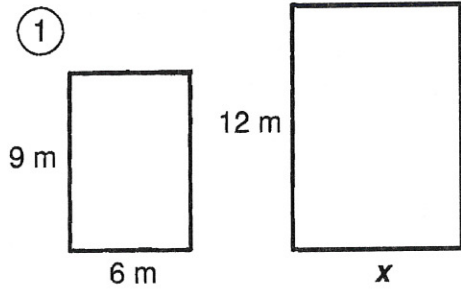
(L) At Paul Bunyon's logging camp, the cook scrambled 20 eggs for every 3 loggers. How many eggs did he need for the 288 loggers at the camp?

24.7	PIECES
21.8	STORIES
1,840	FAINTED
197.5	DROPPED
19.6	THAT
1,625	CAN
6.7	THE
116	BOX
20.4	WHO
127	TRASH
1,355	PILE
317	INTO
235	AND
3.8	TEN
42.7	WRITER
109	A
324	FROM
1,920	LIVED
211.5	WROTE

What Is a Termite's Favorite Breakfast?

For each pair of similar figures, find the length x . Cross out the letter next to your answer. When you finish, the answer to the title question will remain.

E	9 cm
L	14 cm
T	15 ft
A	20 m
G	50 in.
G	8 m
E	24 in.
S	12 cm
M	16 ft
K	46 m
D	21 in.
A	44 cm
C	10 cm
O	18 m
O	48 in.
F	40 cm
W	42 m



- ⑨ A flagpole casts a shadow 10 ft long. If a man 6 ft tall casts a shadow 4 ft long at the same time of day, how tall is the flagpole?

- ⑩ A photograph is 25 cm wide and 20 cm high. It must be reduced to fit a space that is 8 cm high. Find the width of the reduced photograph.